



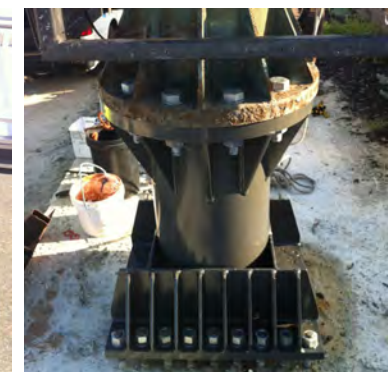
CASE STUDY

APN Perth Airport Drive

Digital Gantry Sign



Yap!.out
outdoor digital signage



Our challenge – a 2 week works window to dismantle, re-engineer and re-install two large format APN Digital Gantry Signs across the new Airport Drive at Perth's International Airport. Due to Main Roads regulations, the Digital Gantry's had to be raised one metre higher in their new location on this major access route.

The new footings on Airport Drive were installed 14 months prior to the signs being relocated from Brearley Ave, before Airport Drive was officially opened to the public. This involved working on a 50% complete road, and required critical

collaboration with Brierty, Perth Airport's road building contractor, for all access to site. Initial engineering fabrication on the above ground structure involved fabricating four new column

extensions to increase the height from the top of the roadway to the base of the signs. The new extensions had to be precision engineered to ensure the base plates would align "millimetre perfect" to the base plates on the existing columns.

We developed a specific works programme that involved one week of day works, followed by a week of night works to accommodate all users of this major Airport access road, and to ensure the signs were only "off-line" for 2 weeks. This was a key project criteria to all stake holders.

The digital tiles were removed and stored during the relocation works to avoid damage to the tiles. Our team worked through the night to minimise the impact of road closures. The gantries were clad with

mesh, and following engineering certification, web cams were cabled in and commissioned. Extensive testing of all the digital elements ensued to ensure the screens displayed imagery with issues. Implementation of a traffic management plan to minimise risks on this important Airport access road was imperative.

Our team were on site for each day's pre-start meeting and the night works pre-start to ensure OH&S compliance. In this way we were able to keep a tight handle on progress, ensuring that updates were sent to all key stake holders daily.

As with any project, safety and environmental factors always play their part! On this job the total fire ban during our installation timeframe (February 2016) challenged our adherence to the construction programme and resulted in us finding alternative safe work methods to cut the CCTV camera poles off and delays to cutting off bolts.

OUR SCOPE OF WORKS INCLUDED:

- Design
- Geotechnical
- Structural Engineering
- New footings on Airport Drive
- Mesh Cladding
- Ground works
- Electrical & data works
- OSHE & permits
- Traffic management
- Electrical connections & digital signage commissioning
- Painting of extensions and mesh
- Project Management
- Fabrication of x4 new extensions

One of the critical, challenging and key design elements was ensuring the new footings on Airport Drive and the new extensions aligned with the existing columns. The new footings on Airport Drive were staggered so both inside columns were on the same footing (due to the minimal width on Airport Drive compared to the signs former location on Brearley Ave).

Despite the scale and complexities of this project the client was delighted – “Well done everyone, great couple of weeks work!”

The Digital Signs are presently the largest outdoor Digital Signs in Perth and are some of the largest in Australia.





We're ready to start talking!
Speak up now about your next project or idea.

P +618 9274 5151

E admin@signsandlines.com

M +614 0719 9576

yapdigital.com.au

Yap!digital, 5 Meliador Way, Midvale, Perth WA 6056

